



print logic



When your business needs a
Printer, Photocopier or a Document
Management solution
Print Logic has you covered



Contents

| | |
|-----------------------------|--|
| About Us..... | |
| Our Reach | |
| Managed Print Services..... | |
| Printer Leasing..... | |
| Printer Rental..... | |
| Printer Repairs..... | |
| Printer Servicing..... | |
| Document Management..... | |
| Sectors..... | |
| Service & Support..... | |
| Social Responsibility..... | |
| CSR Strategy..... | |

About Us

Print Logic is an industry-leading supplier of Printers, Photocopiers and Document Management Solutions

We are proud to push the boundaries of automating the business process using digital workflow and the expert application of cutting-edge hardware & software through printer and photocopier management.

As well as hardware, we have experts who utilise smart software to help speed up complex processes into simple, quick tasks which are started and finished at the press of a button, saving them hours of work and enabling them to concentrate on value-based activities.

We also provide service, maintenance and repairs to photocopiers, printers and shredders, regardless of make or model.

OUR PURPOSE

Our purpose is to partner with like-minded organisations, helping you maintain the competitive edge in your chosen marketplace.

OUR VISION

Whilst remaining fully privately owned and independent, our aim is to disrupt the UK Managed Print and Document technology sector and be the #1 partner of choice for business transformation and innovation.

OUR MISSION

Maintaining a fulfilling, empowering, inclusive and flexible working environment for all Print Logic personnel. A commitment from all staff to supporting clients with passion, positivity, and a 'can-do' approach at all times. Consistently maintaining client-centricity, service excellence and innovation. A thorough consultative approach, identifying and resolving your business pains caused by printing and document inefficiencies. Helping to develop and deliver upon your commitments to Corporate Social Responsibility, employee well-being and positive environmental change. Focusing on employee productivity and performance using state-of-the-art business process tools for improved efficiencies. Helping you continue to win with your customers, partners and suppliers through the use of more efficient technology both now, and in the future. Helping you remain agile and maintain your competitive advantage to stay ahead of the curve in an ever-changing environment. Aligning our values so that together, we can make a difference to our wider communities and effect positive change.

Our Reach

Our network of regional offices is supported by over 100 professional, dedicated personnel. We are here to support you and provide exceptional levels of personal customer service.



 **Merseyside**

 **Midlands**

 **Manchester**

 **North Wales**

 **Nottingham**

 **Leicester**

 **Hull**

 **Cardiff**

 **Leeds**

Managed Print Services

Our Managed Print Service will eliminate the cost, complexity and stress of managing your printers. We'll manage your printers while you manage your business.

From installation, setup and maintenance, to print usage monitoring and supply ordering, we'll take care of everything and provide you with ongoing support from our team of Print Logic experts.

EFFICIENCY

Remove clutter and increase efficiency by having one device to accommodate all of your printing requirements. We provide high-volume MFPs (Multifunction Printers) which can handle multiple print jobs at once, accessible by any colleague.

Built-in features allow you to scan documents which archive directly into your current data library, or email and fax them to your clients and staff directly from the device.

With low power modes and the quickest startup speeds available, the award-winning devices we provide can reduce monthly energy bills at the same time as providing a completely powered-up and ready-to-use device in an instant.

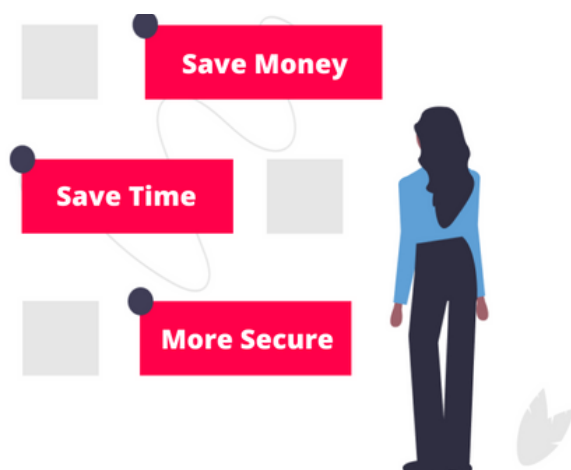
SECURITY

Print Logic conducts a full print assessment as part of your Managed Print Service which can identify print and IP security risks.

Security features will be tailored to your business and included in your Managed Print Service. This may include printer sign-in authentication to ensure documents are handled by the correct people, waste disposal and document management solutions or network-level security to ensure no information is able to be retrieved by hackers.

ENVIRONMENT

Reducing your environmental footprint is all part of being a responsible, modern business. With a monitoring system in place as part of your Managed Print Service, you'll be able to identify and track levels of print usage. That way, you'll be in a position to intervene when you need to and reduce your environmental footprint.



PRODUCTION PRINT & PRINT ROOM

Our team of printer experts provide the latest in high-speed colour and mono printing solutions, combined with the most advanced workflow, web to print and job submission tools on the market

Printer Leasing



A printer lease is a perfect solution and an easy way to enjoy all the benefits of a brand-new, feature-packed printer without the associated upfront costs of buying a printer or fleet of printers outright.

A printer lease typically lasts for 3 to 5 years and is the preferred option for many businesses who know they'll need a printer for that length of time. You'll have the ability to upgrade your machine should your requirements change during your lease. Once you reach the end of your contract you'll have the option to end your lease, renew, upgrade your printer or even buy your printer.

Printer leasing removes the burden of a hefty initial outlay while still delivering that top-spec printer your business needs.

Fully managed with all toners included

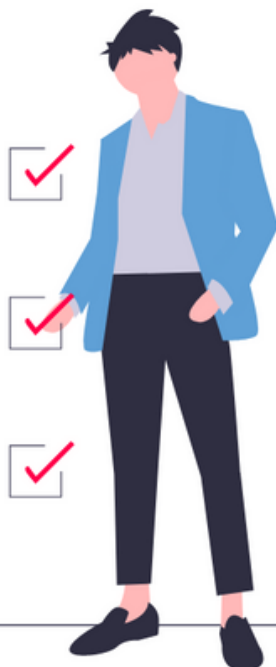
Regular preventative maintenance and all repairs included

Full installation, staff training and complete technical support

No initial investment

Tax efficient

Just add paper



All printer lease payments can be deducted as a regular business expense, meaning your monthly lease payments are 100% tax-deductible.

Printer Rental

A multifunction office printer can easily cost thousands of pounds for just one device, that's without the additional cost of consumables such as toner or ink. For most small businesses buying a printer outright is too expensive. By renting your printers as part of a Managed Print Service you can avoid these large upfront costs and associated maintenance fees.

Rental periods can range from a few days to a few years, giving you the flexibility to be able to keep your printer for just as long as you need it.



If you don't want to commit to a 3-5 year lease agreement, rent a printer for a few weeks up to a few years on a monthly rolling contract.

Avoid the large expense of buying a printer or fleet of printers outright, with a fixed monthly payment and all consumables covered you can relax and focus on your business.

Big marketing drive coming up? Spike in document production? Need a printer for a few months? Rent a printer for as long as you need it.

Flexibility

No upfront costs

Short term needs



Let Print Logic's Managed Print Services manage your printer security so you can focus on your core business. You can count on Print Logic to help assess your risks, secure your fleet, and implement a robust print security policy

Printer Repairs



Don't let your broken printer slow you down. Get your printer repaired today by our certified engineers.

We are one of the UK's leading printer repair providers. With over 20 years of combined experience dealing with printer issues, we have helped many businesses just like yours resolve printer problems.

We are committed to improving your office environment so your business can succeed.

Our standard time on site is around one hour. In most cases, this is enough time for us to diagnose and resolve the issue, as well as offer friendly and impartial advice on how to improve the device's lifespan.



96% first-time fix rate
Time-served engineers
Professional advice

99.7% Customer uptime

Response time in under 4 hours

Wide format printer repairs

If you have a Managed Print Service agreement with us, engineer callouts are part of your standard service, so no charges will be incurred

Printer Servicing

We offer same-day printer servicing across most of the UK. Whether your printer is jamming, showing an error code or needs an overhaul. Our team can service your printer at a time that suits you.



Same-day service available

Fully certified engineers

All makes & models serviced

A full service includes:

- ✓ Strip down of the machine
- ✓ Removal of all major components
- ✓ Internals of the machine inspected and cleaned
- ✓ All gears checked and lubricated
- ✓ Major components cleaned and inspected
- ✓ Any necessary adjustments carried out
- ✓ Check and update of firmware if necessary
- ✓ Check of internal error codes, action taken if necessary
- ✓ Reassembly of the machine
- ✓ Colour calibrate
- ✓ Test and check
- ✓ Machine health report provided
- ✓ Any parts required will be quoted separately

If additional work is needed, we'll provide a no-obligation quote for any parts and labour which might be needed.

Document Management



ENHANCED SECURITY

Document Management allows your business to have full control of its documents and provides a full audit trail allowing you to easily see who viewed, modified and accessed any documents. It provides granular control of the document flow around your business to avoid any potential document security mistakes.

AUTOMATED WORKFLOW

Document workflows or rules can be set up quickly and easily, automating your paperwork and sending of documents for approvals, feedback, digital signatures or archiving. This process saves a huge amount of time and eliminates potential mistakes, where your document has been sent to the wrong person or an outdated version has been sent instead.

REDUCED STORAGE SPACE

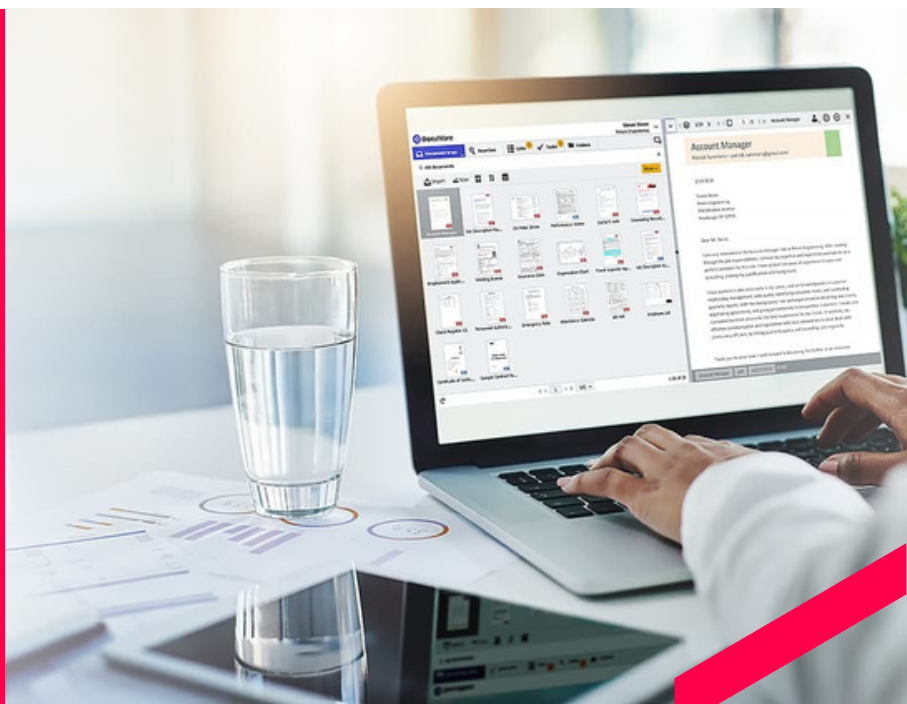
A document management system reduces the need for bulky document cabinets. Businesses are now increasingly allowing more staff to work from home, and reducing paper documents allows you to scale down and streamline your office space.



Increase your document security, automate your processes and reduce your required storage space by becoming a paperless office. Inspire better collaboration between employees, and mitigate the risk of lost documents due to disasters or theft.

Get peace of mind, knowing that you're complying with relevant GDPR regulations and keeping your clients' information confidential.

Print Logic work with the award-winning DocuWare system



Document Management System

BETTER COLLABORATION

Documents can be accessed at multiple locations by different people, both internally and externally, all based on the rules and workflows you set up. You have full control over who has access to documents, access can be approved and monitored with full version control.

DISASTER RECOVERY

With a Document Management System, any documents your business holds are completely backed up and protected from disasters, such as flooding, fire and any other forms of destruction.

REGULATORY COMPLIANCE

Document management reduces the risk of non-compliance by giving you full visibility and control of your business documents. Documents are fully traceable with approval history and audit trails, while record retention and archiving can be fully automated.



Sectors

Our team have implemented and continues to support in excess of 800 Managed Print Solutions across multiple sectors, throughout the UK. With decades of experience, all team members treat every client with a fresh, consultative approach

With continual investment in our people, process and technology, and a commitment to building partnerships with all clients, each team continues to grow from strength to strength

PUBLIC SECTOR

Print Logic's Public Sector strategy has developed over many years and we are proud to be an approved supplier on many leading Government frameworks.

Public Sector clients range from numerous NHS Trusts, Healthcare bodies, Colleges, Academies, Schools, Universities, Councils & Government Services



MID-MARKET

Supporting SME's is the core of our business.

Most of our team are not market specific and adopt the approach that every client, big or small, is valuable and we therefore strive to deliver the highest levels of service to all clients at all times.



CORPORATE

The Corporate Account Team support our larger, and national clients.

Whilst working with clients from all sectors, our team have dedicated professionals working specifically in Transportation, Financial Services, Property, Charities, Media and Law.



Crown
Commercial
Service
Supplier



Service & Support

Print Logic believes exceptional service is the key differentiator and has invested heavily to ensure that each client enjoys the very highest level of service and support. As technology continues to evolve so does our ability to improve solution uptime and client satisfaction further.

Utilising our technical help desk we are able to close a high percentage of calls remotely, often doing so before the fault is identified by the client. This results in fewer engineer visits, increased uptime and improved user satisfaction.



Customer Testimonial



Print Logic's customer service was great from start to end. They completed a printer service for us and did a great job. The engineer gave great advice and then the office followed it up with a phone call to make sure we were happy with the service and our issues with the printer were sorted. Would recommend and use again.

Lansdowne Group

Monday - Friday
8.30 - 17.00

print-logic.com

03303 500 998

info@print-logic.com

Social Responsibility

We believe that a commitment to the principles of corporate social responsibility (CSR) not only makes good business sense but also complements our core business strategy for the future of Print Logic.

Print Logic has a long-term strategy of growth and fully understands that to succeed we need to give back.

This strategy involves six main areas, however, this strategy will evolve according to the needs of the local community and the environment in which we and our stakeholders operate.



CSR Strategy

SUSTAINABILITY

We will push our programme of refurbishment – contributing to a circular economy in which at least 40% of what we sell has come from re-using machines and refurbishing them to a near-new standard. Machines that otherwise would find their way to landfills.

We will work alongside our partners to create a programme in which toner cartridges can be recycled.

We will help our customers reduce their carbon footprint by installing eco-modes as standard on all our ranges, as well as working on a case-by-case basis, to fit our service seamlessly into their sustainability goals.

PARTNERSHIP

A coherent and effective CSR strategy is unachievable without the help of our employees, customers, and suppliers. We will always listen to their needs and opinions and if possible, alter our service in order to work alongside them for the common good.

EMPLOYEE HEALTH & WELLBEING

We will continue to invest in the training and development of our staff, giving them the opportunities to grow and to include us in their journey. We will make sure that we provide out-of-business hours team building. We cultivate a culture of openness and frankness with a guaranteed open-door policy for senior management.

LONG TERM

We will invest in apprenticeships within all departments. Training people (alongside our training partners) is the key to success. We will always have in place a five-year strategy for growth and continuing CSR.

ETHICS

We will adhere strongly to a set of ethics that has integrity and sincerity at its core. This will apply not only to our customers but also to all the stakeholders in our business.

COMMUNITY INVOLVEMENT

We want to play an important role in our local community and we hope to make the communities in which we offer services better places. We encourage employees to get involved with their local communities and use their talents, skills, and where possible the company's resources to help create a mutual benefit. Every year we pick a charity to support and our employees raise money through activities.





print logic

